

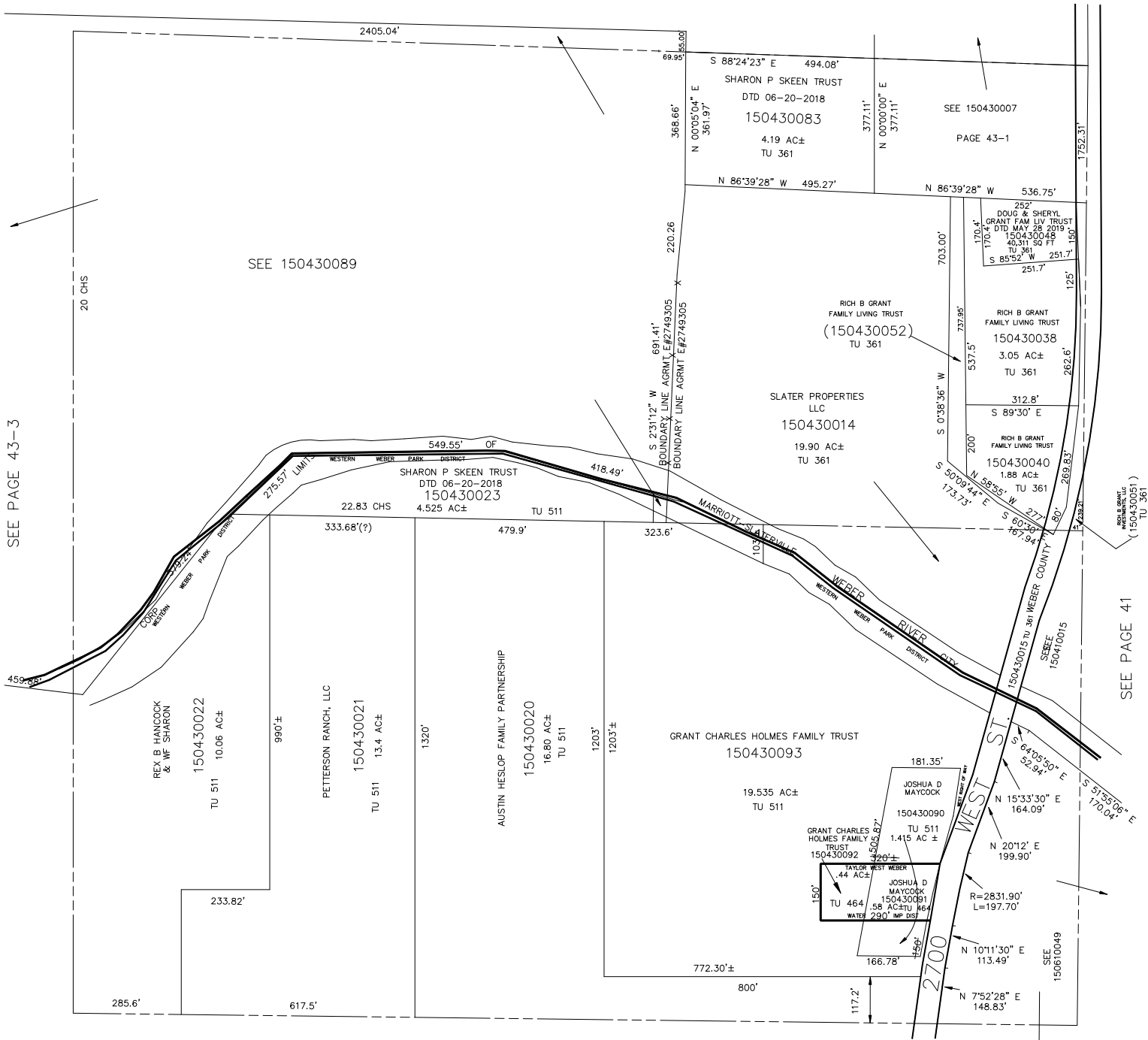
SE 1/4  
SECTION 15, T.6N., R.2W., S.L.B. & M.

IN MARIOTT-SLATERVILLE CITY & WEBER COUNTY

TAXING UNITS: 36,464,511

SCALE 1" = 200'

SEE PAGE 43-1



SEE PAGE 43-3

SEE PAGE 41